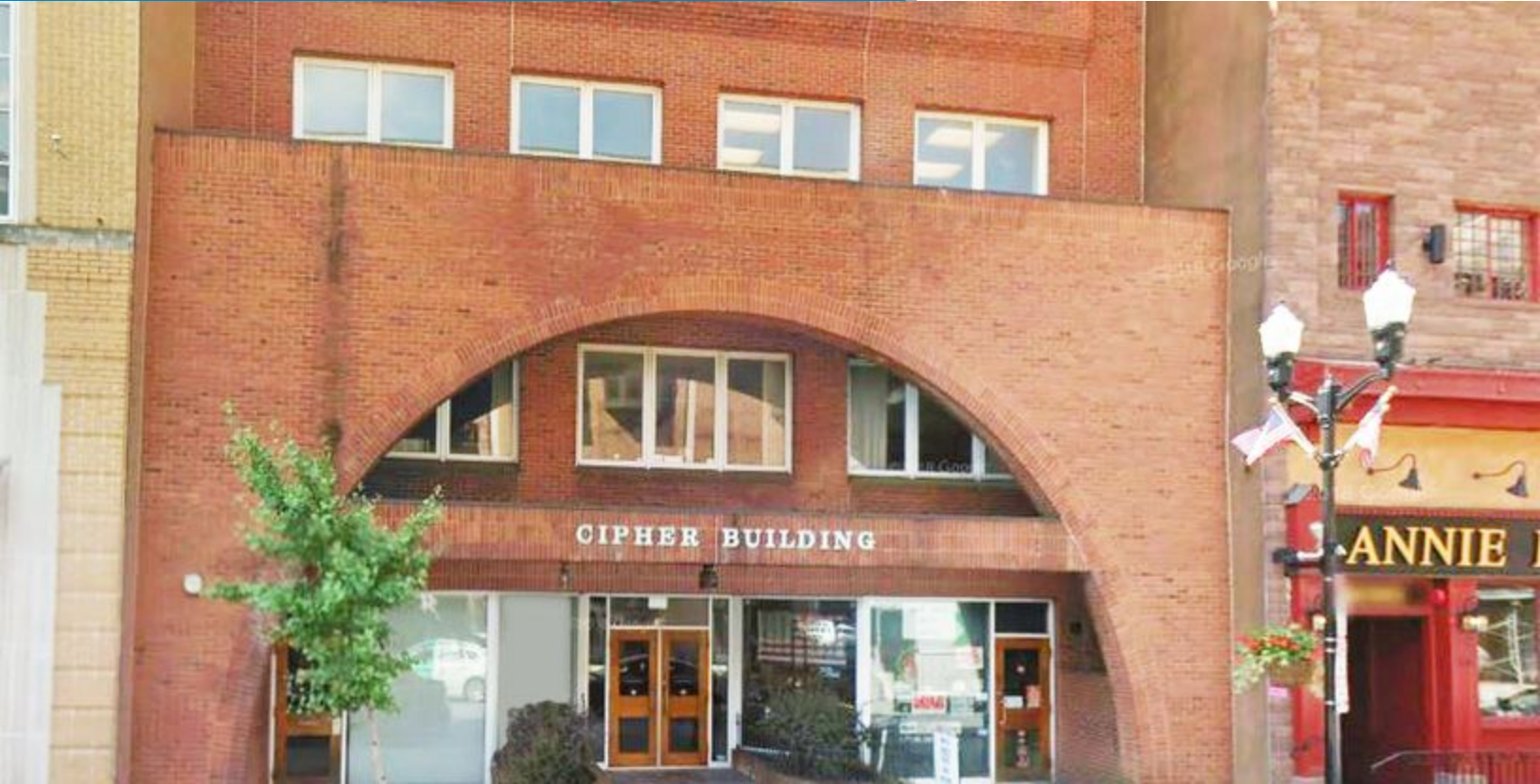


FOR LEASE

36 East King Street



LANCASTER, PA 17602

PRIVATE OFFICES

LOTS OF NATURAL LIGHT

SPACE FEATURES NEW CARPET
AND PAINT

F. JEFFREY KURTZ, CCIM

717.293.4554

jkurtz@high.net

HIGH ASSOCIATES LTD. • 1853 WILLIAM PENN WAY • LANCASTER, PA 17601 • 717.293.4477 • HIGHASSOCIATES.COM
Information furnished regarding property for sale or rent is from sources deemed reliable but is not guaranteed. No warranty or representation is made as to accuracy thereof and is submitted subject to errors, omissions, change of price, or other conditions, prior sale or lease or withdrawal without notice. No liability of any kind is to be imposed on the broker herein.



FOR LEASE

36 East King Street



LEASE INFORMATION

Lease Rate:	\$17.25 SF/yr (Gross)
County:	Lancaster
Municipality:	City of Lancaster
Available SF:	2,731 SF

PROPERTY OVERVIEW

Lots of natural light in this professional office on the third floor of the Cipher Building. Several private offices, open area, receptionist/waiting area, conference room and kitchen. Many uses are acceptable and would be perfect for a law firm, mortgage company, marketing group or similar professional services. Space features new carpet and paint throughout and is move in ready.

OFFERING SUMMARY

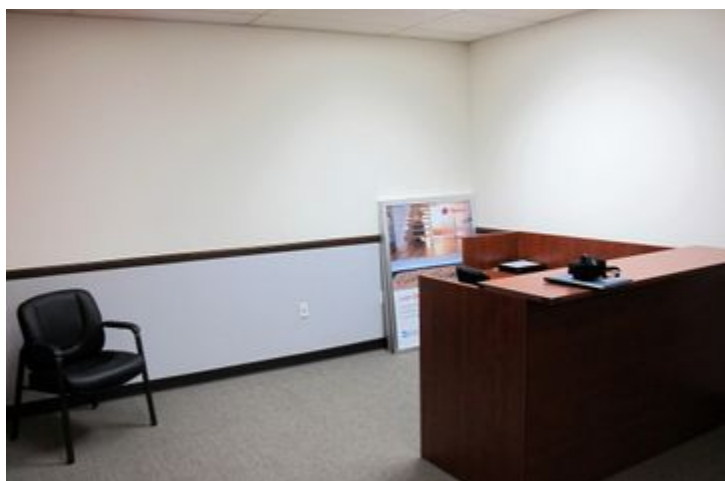
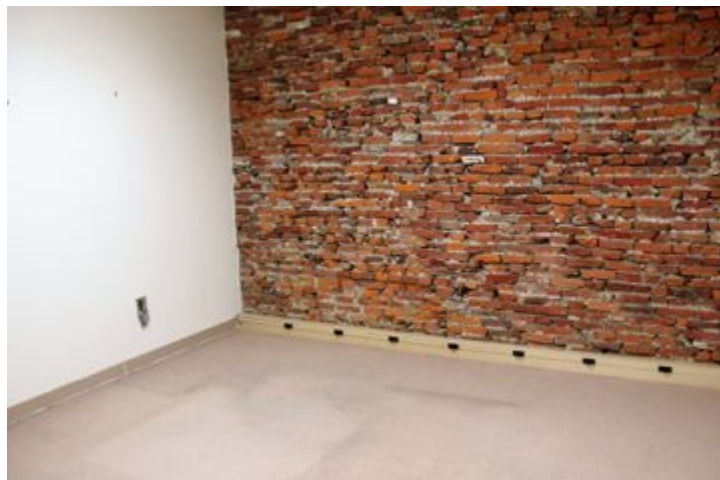
HVAC:	Central A/C	Lighting:	Fluorescent
Water:	Public	Number of Floors:	3
Sewer:	Public	Flooring:	Carpet
Zoning:	Central Business Core		



F. JEFFREY KURTZ, CCIM
717.293.4554
jkurtz@high.net

FOR LEASE

36 East King Street



F. JEFFREY KURTZ, CCIM

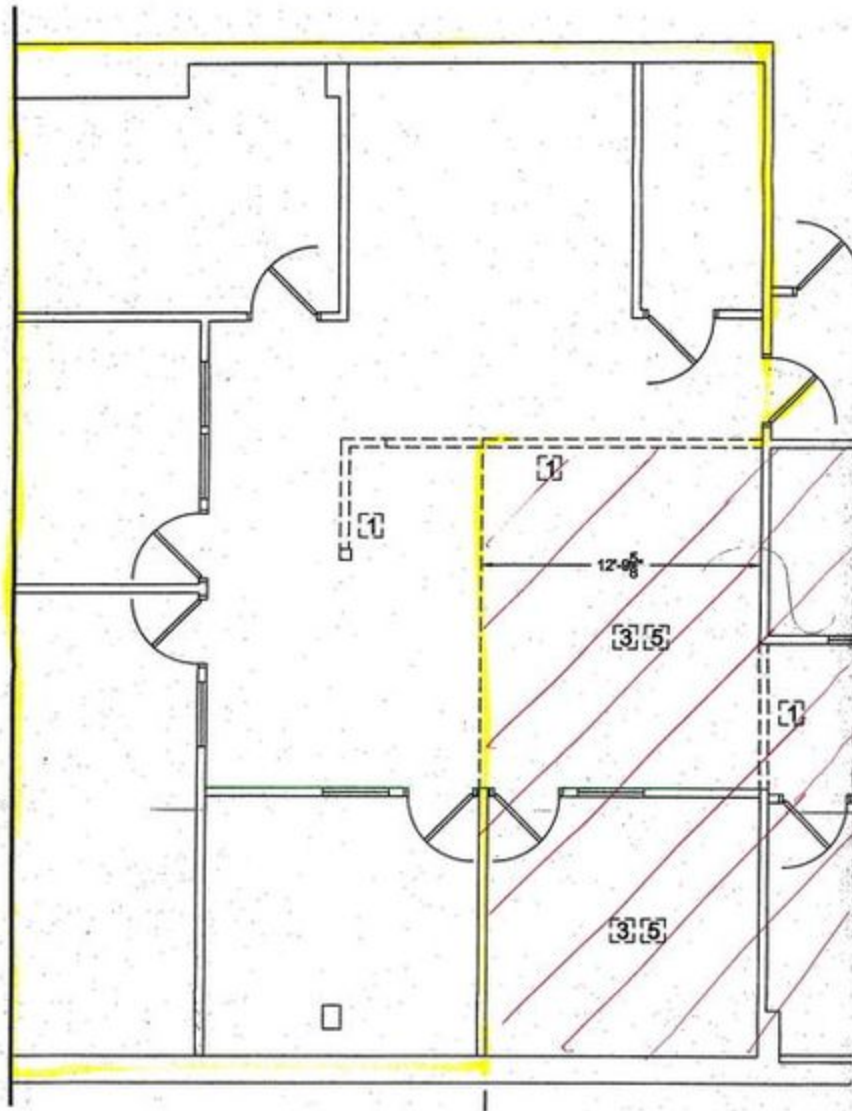
717.293.4554

jkurtz@high.net

HIGH ASSOCIATES LTD. • 1853 WILLIAM PENN WAY • LANCASTER, PA 17601 • 717.293.4477 • HIGHASSOCIATES.COM

FOR LEASE

36 East King Street

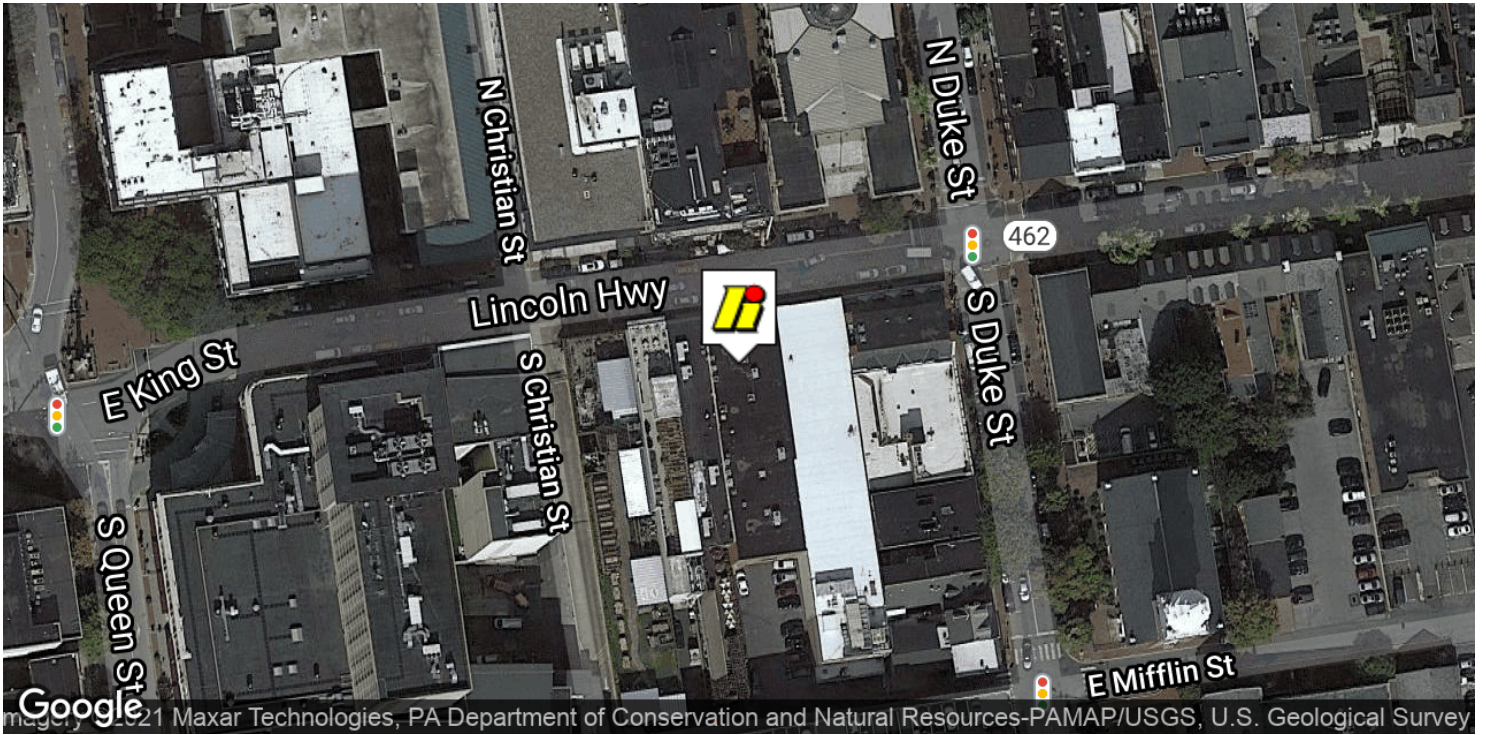


F. JEFFREY KURTZ, CCIM

717.293.4554
jkurtz@high.net

FOR LEASE

36 East King Street



F. JEFFREY KURTZ, CCIM
717.293.4554
jkurtz@high.net

FOR LEASE

36 East King Street

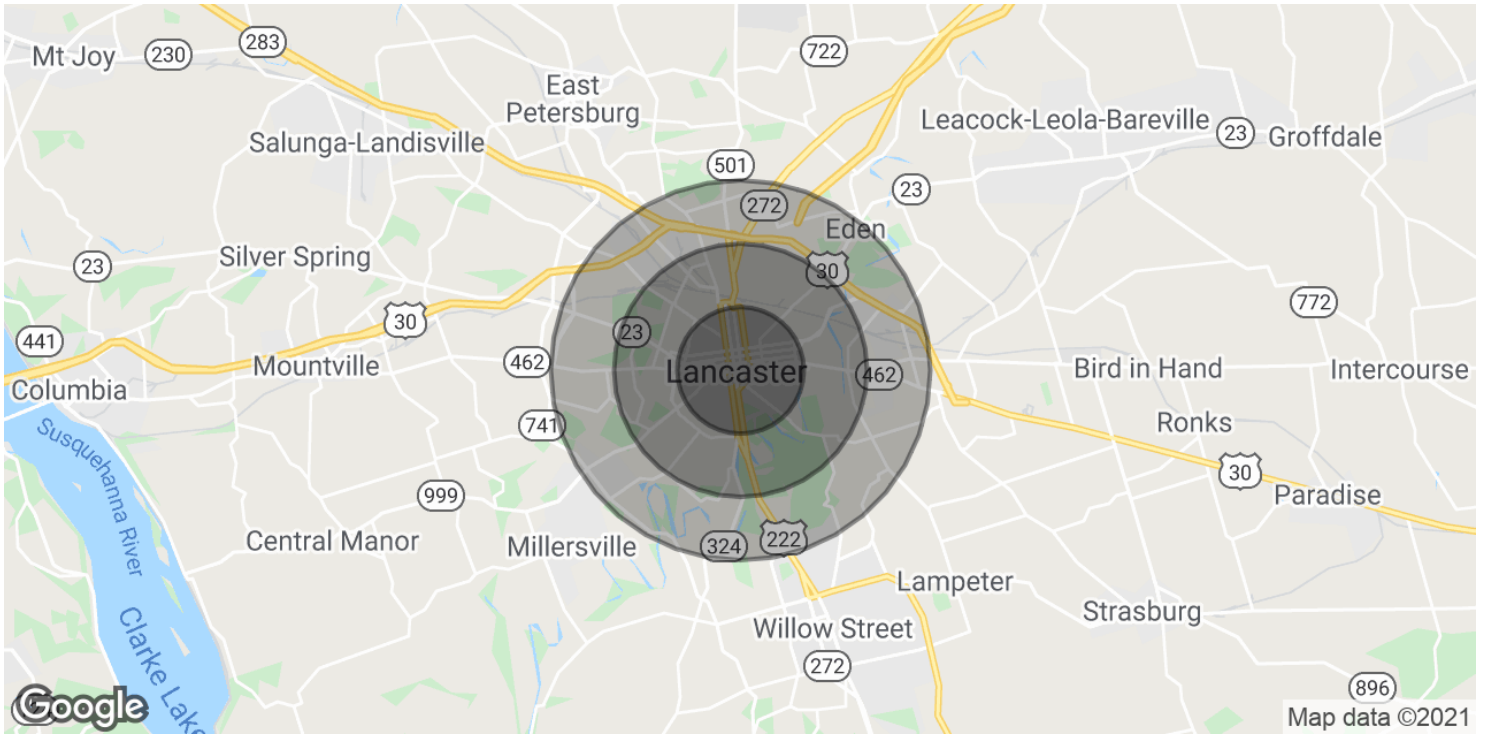


F. JEFFREY KURTZ, CCIM

717.293.4554
jkurtz@high.net

FOR LEASE

36 East King Street



POPULATION	1 MILE	2 MILES	3 MILES
Total Population	43,248	88,624	117,010
Average age	29.8	32.0	34.7
Average age (Male)	28.6	30.5	33.0
Average age (Female)	30.9	33.2	36.0
HOUSEHOLDS & INCOME	1 MILE	2 MILES	3 MILES
Total households	16,344	33,595	45,414
# of persons per HH	2.6	2.6	2.6
Average HH income	\$36,789	\$45,196	\$52,588
Average house value	\$114,182	\$122,018	\$144,289

* Demographic data derived from 2010 US Census

F. JEFFREY KURTZ, CCIM

717.293.4554
jkurtz@high.net

FOR LEASE

36 East King Street



HIGH
ASSOCIATES
LTD.

An Affiliate of High Real Estate Group LLC

*Every Company dreams its dreams and sets its standards
These are ours . . .*

We are committed to two great tasks:

1. BUILDING TRUSTWORTHY RELATIONSHIPS.

- Valuing our customers and meeting their needs.
- Respecting the dignity of all co-workers and their families.
- Energizing our teamwork with participative management.
- Recognizing and rewarding the accomplishments of our co-workers.
- Strengthening our partnership with suppliers.
- Contributing to a world of beauty and prosperity and peace.

2. BEING INNOVATIVE LEADERS.

- Creating an environment for innovation since 1931.
- "Right the first time" - High quality products and services.
- Investing profits to secure our future.

WE GIVE GOOD MEASURE.

1853 WILLIAM PENN WAY
Lancaster, PA 17601
717.293.4477

5000 RITTER ROAD SUITE 201
P.O. Box 1367
Mechanicsburg, PA 17055