

FOR LEASE

iHIGH ASSOCIATES LTD.
An Affiliate of High Real Estate Group LLC
Industrial/Commercial Realtors



36 EAST KING STREET
LANCASTER, PA 17602

Jeff Kurtz, CCIM
717.293.4554 – direct line
jkurtz@high.net



► Office Property



Jeff Kurtz, CCIM
717.293.4554 – direct line
jkurtz@high.net

*36 East King Street (First Floor)
Lancaster, PA 17602*

Available Square Feet

1,621 rentable square feet on the 1st floor
1,410 useable square feet on the 3rd floor

Lease Rate

\$17.25/SF Gross

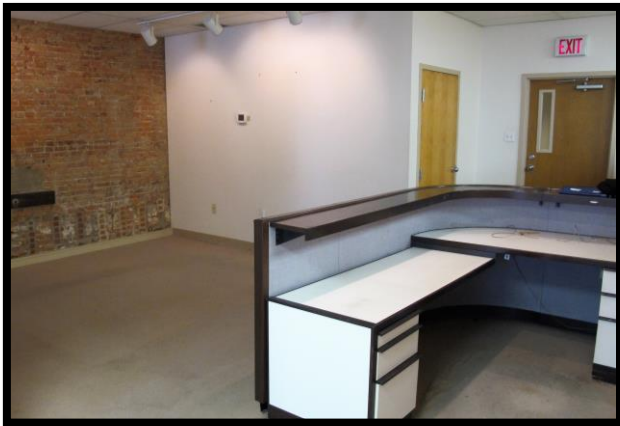
Description

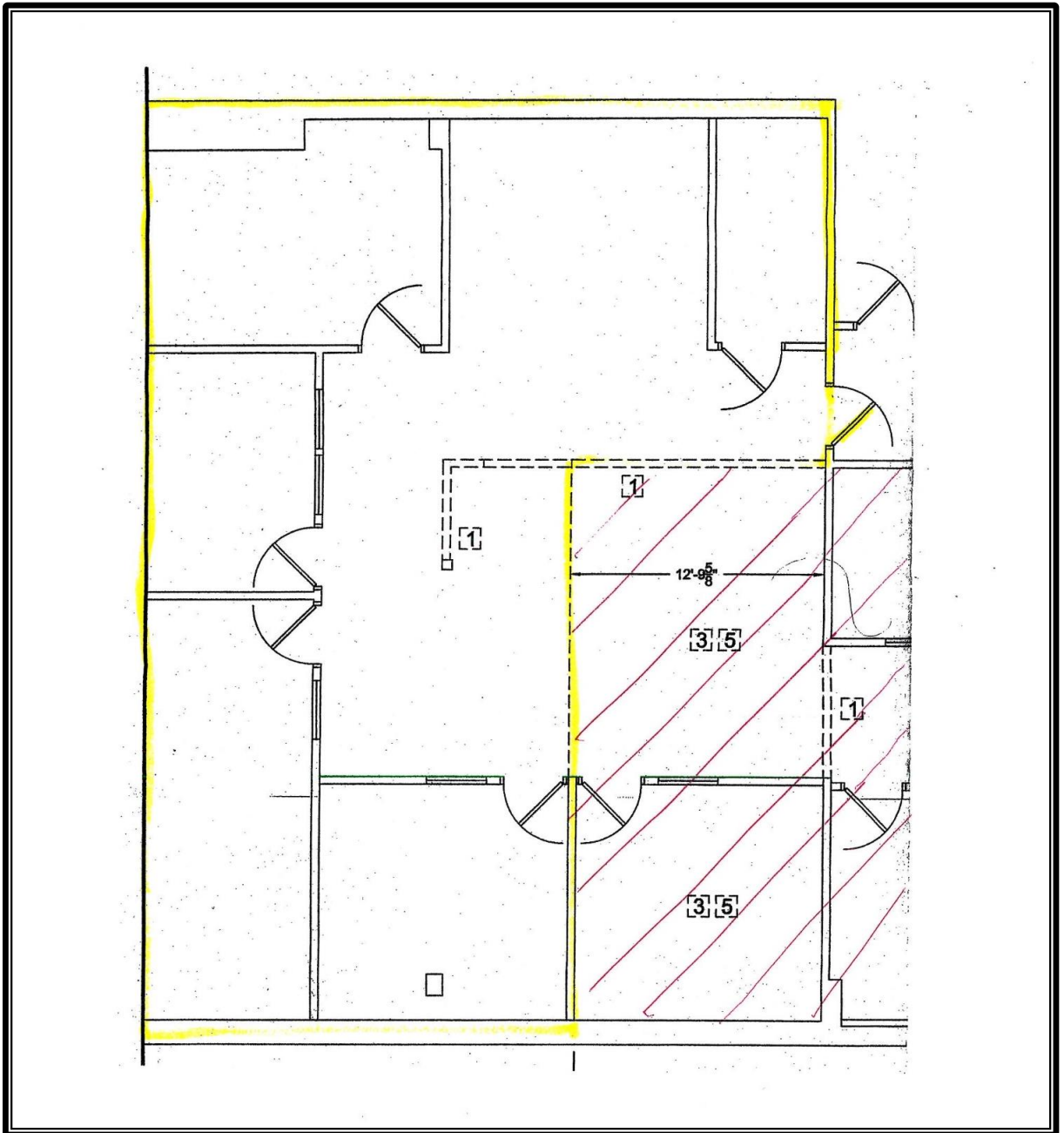
Well-lit professional office spaces in the Cipher Building. Many uses are acceptable and would be perfect for a law firm, mortgage company, marketing group or similar professional services.

BUILDING INFORMATION

First Floor Square Feet	1,621 rentable square feet 1,410 useable square feet
Year Constructed	1979
Construction Type	Brick
Air Conditioning	Central A/C
Heating	Electric
Electric	200 amp service
Tax Account #	333-33502-0-0000
Zoning	Central Business Core
Municipality	City of Lancaster
County	Lancaster County
Acres	.27 acre

Information furnished regarding property for sale or rent is from sources deemed reliable, but is not guaranteed. No warranty or representation is made as to accuracy thereof and is submitted subject to errors, omissions, change of price, or other conditions, prior sale or lease or withdrawal without notice. No liability of any kind is to be imposed on the broker herein.







► Office Property



Jeff Kurtz, CCIM
717.293.4554 – direct line
jkurtz@high.net

36 East King Street (Third Floor)
Lancaster, PA 17602

Available Square Feet

2,731 rentable square feet on the 3rd floor
2,325 useable square feet

Lease Rate

\$17.25/SF Gross with carpet and paint

Description

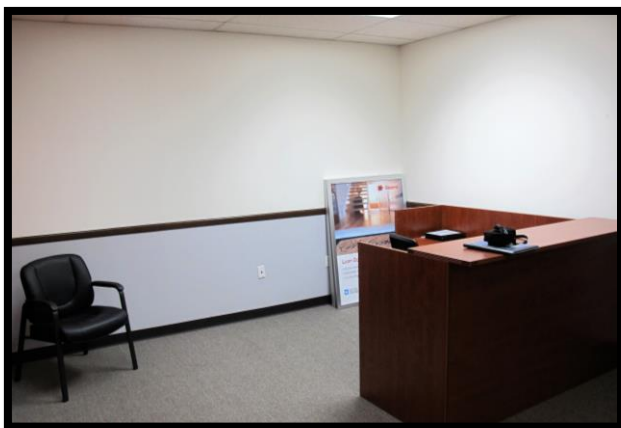
Well-lit professional office on the third floor of the Cipher Building. Several private offices, open areas, conference room and kitchen. Many uses are acceptable and would be perfect for a law firm, mortgage company, marketing group or similar professional services.

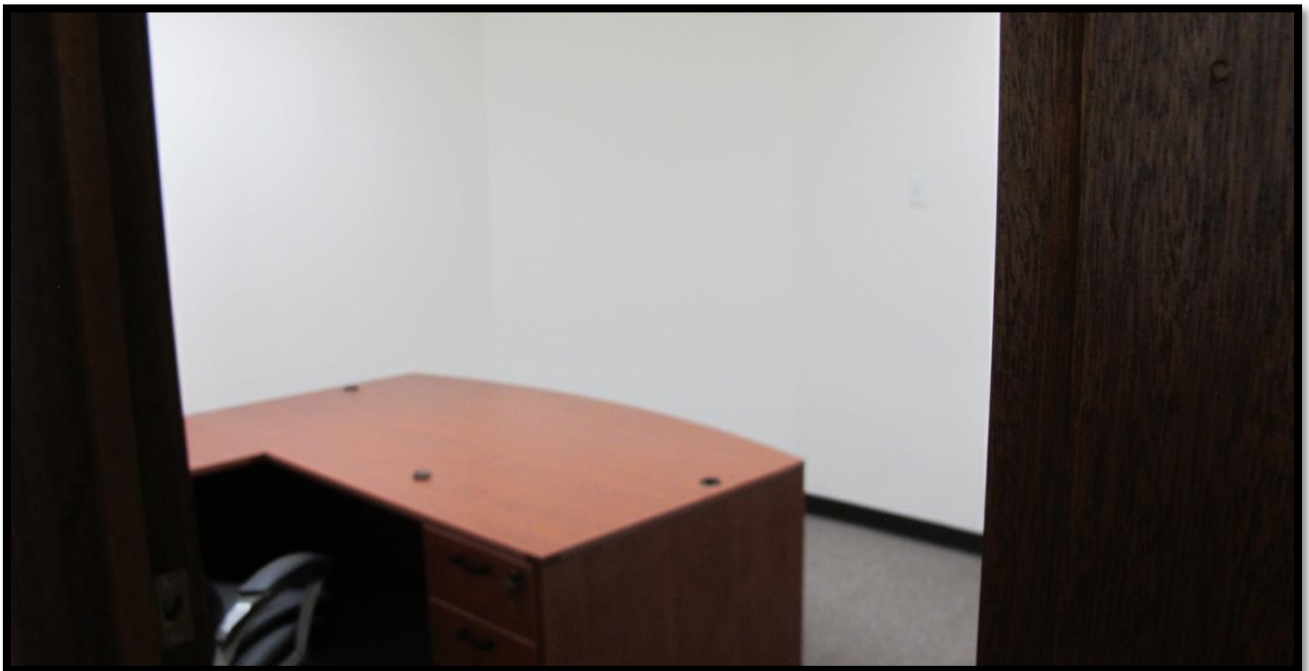
BUILDING INFORMATION

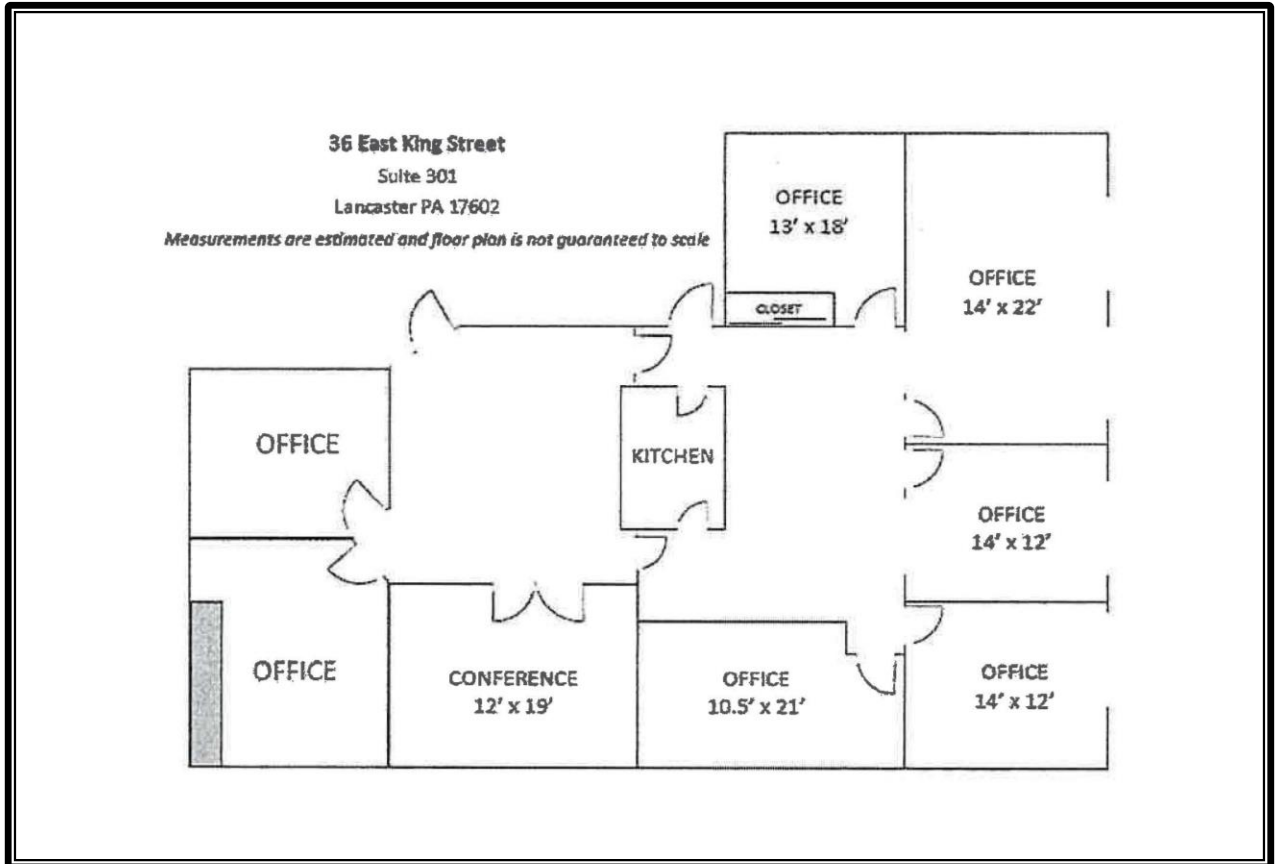
Third Floor Square Feet	2,731 rentable square feet 2,325 useable square feet
Year Constructed	1979
Construction Type	Brick
Air Conditioning	Central A/C
Heating	Electric
Electric	200 amp service
Tax Account #	333-33502-0-0000
Zoning	Central Business Core
Municipality	City of Lancaster
County	Lancaster County
Acres	.27 acre

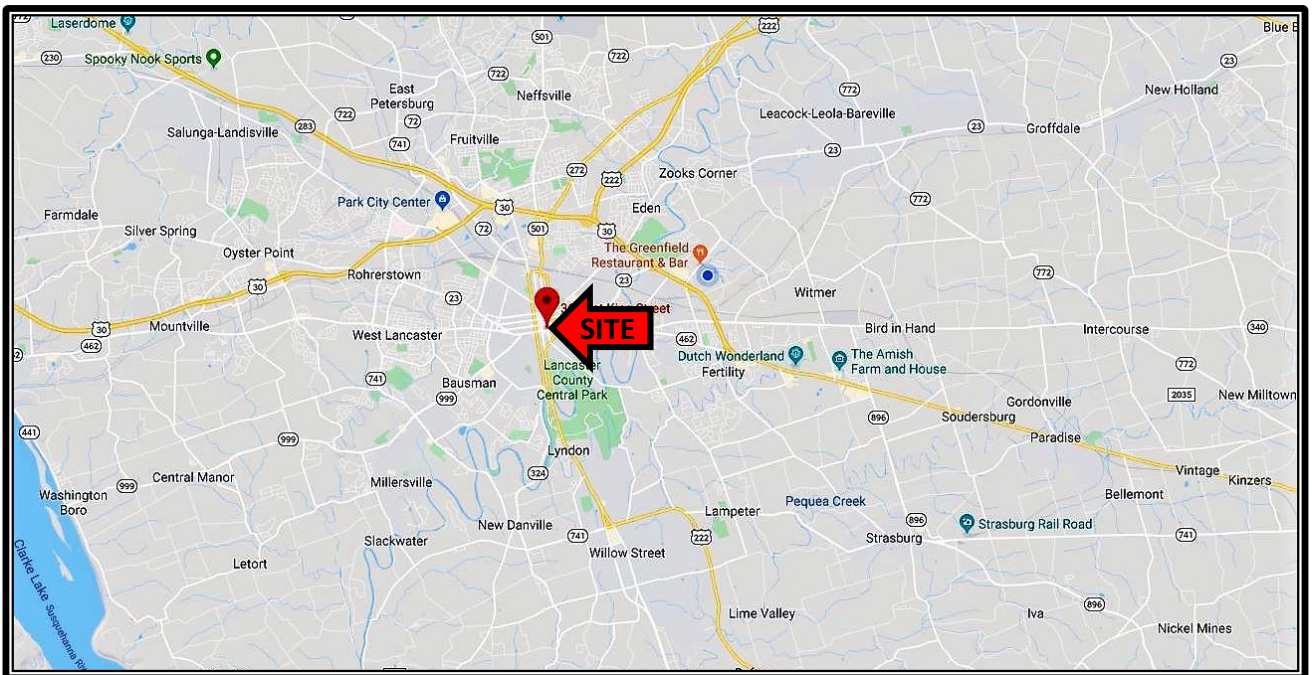
Information furnished regarding property for sale or rent is from sources deemed reliable, but is not guaranteed. No warranty or representation is made as to accuracy thereof and is submitted subject to errors, omissions, change of price, or other conditions, prior sale or lease or withdrawal without notice. No liability of any kind is to be imposed on the broker herein.

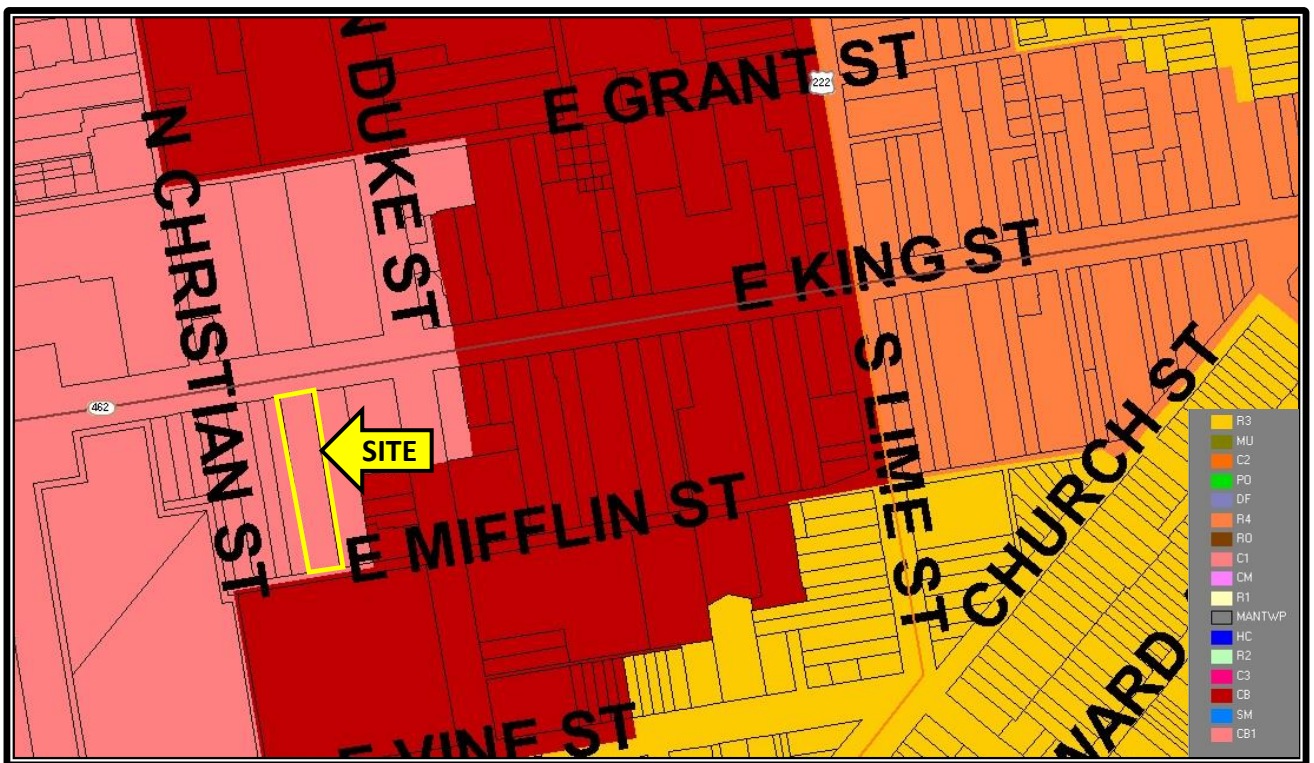
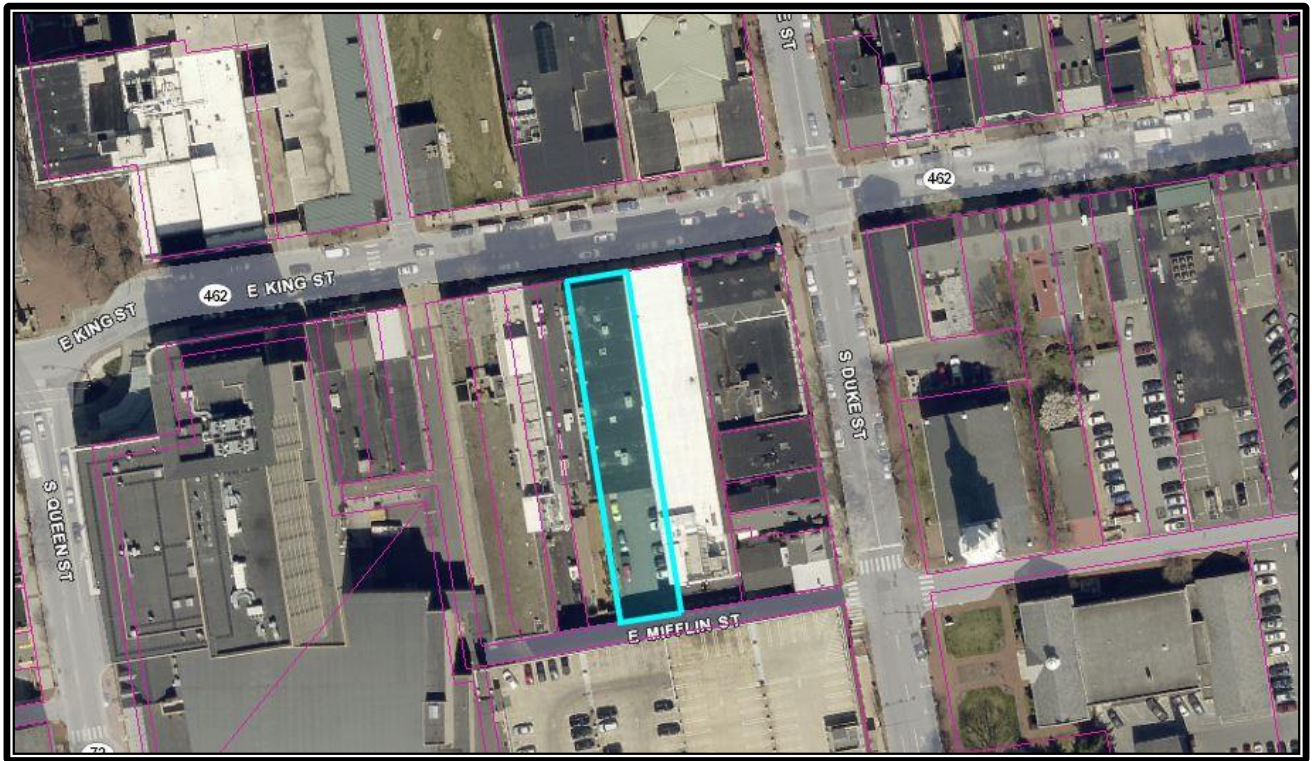














An Affiliate of High Real Estate Group LLC

Industrial/Commercial Realtors

1853 William Penn Way
Lancaster, PA 17601

717.291.2284
FAX 717.293.4488
1.800.638.4414

5000 Ritter Road
Suite 201
Mechanicsburg, PA 17055

717.697.2422
FAX 717.697.0870
1.800.213.0094

525 Highlands Boulevard
Suite 107
Coatesville, PA 19320

610.380.8437
FAX 610.380.0583

11020 David Taylor Drive
Suite 130
Charlotte, NC 28262
704.688.0800
FAX 704.688.0801

6497 Parkland Drive
Suite E
Sarasota, FL 34243
941.756.5599
FAX 941.758.7614

Information furnished regarding property for sale or rent is from sources deemed reliable, but is not guaranteed. No warranty or representation is made as to accuracy thereof and is submitted subject to errors, omissions, change of price, or other conditions, prior sale or lease or withdrawal without notice. No liability of any kind is to be imposed on the broker herein.